

Step-by-Step Instructions

(PRINT this set of instructions to follow every time you refill your cartridge)

Epson

T044120/ 220/ 320/ 420,
T060120/ 220/320/420



Items needed: chip resetter, black pigment ink or cyan, magenta, yellow ink (depending on which cartridge you are refilling), Chip Resetter, paper towels, gloves, aluminum tape, (no refill station is used for the cartridge). Review hints & tips and check list. Do not plug fill hole. **Bottle Seal:** Unscrew lid on ink bottle. Puncture silver seal with needle top making a small hole in the center of seal. Tightly screw on dispensing tip. Rinse dispenser tip before using dispenser tip with another color. Rinse tip with water until the water runs clear. Pull plastic tip cover off of tip of syringe to pour ink.

Syringe: Attach needle tip (located inside station # 4) to the syringe tightly. Unscrew lid on ink bottle. Puncture silver seal with needle tip making a small hole in the center of seal. Pull the correct amount of ink into the syringe. Rinse syringe and needle tip after every use and before using syringe with another color. Rinse syringe and needle tip with water until the water runs clear.

Cartridge Logic

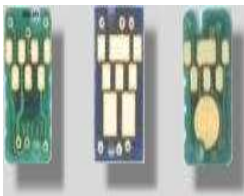
The ink in this cartridge is retained through a complex siphon design. This cartridge is a little more challenging to refill than other Epson cartridges, read the instructions carefully and be patient. Make sure when adding the ink, that you slowly refill or drip the ink into the cartridge. In addition, this cartridge requires a chip resetter. Go ahead and reset the chip prior to refilling. Resetting the chip with a small portable chip-resetter takes less than 5 seconds. This cartridge will not work after refilling unless the chip has been reset.



One of the most popular suggestions for these particular Epson cartridges is to have an extra set of cartridges on hand. This way once you do run low of ink and refill the cartridge, you simply put the other set in and begin printing right away. Store your refilled cartridge's away in a plastic bag and then you will have them the next time you run low of ink. This will also give the refilled cartridges plenty of time for the ink to settle into the cartridges and any air pockets to either dissipate or rise to the top.

Reset the chip on the Epson Cartridge

Use the chip resetter to reset the chip on the cartridge before you refill it. If you do not have a chip resetter you can you will need to purchase a chip resetter. You can get one by calling 1-888-Ink-2008. Without a chip resetter, these cartridges will not effectively work.



[Epson Chip Resetter Compatibility List](#)

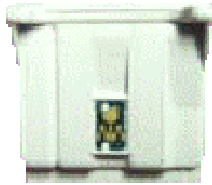
How to use Chip Resetter?

There are several specially designed notches to fit the various designs of Epson chip cartridges. (See Illustrations below) The pins on Chip Resetter should tightly connect with the chip on the cartridge as shown to the right. The LED will light up and will flash 3-4 times when the cartridge has been successfully reset.



The method to reset the C70/C80/C82/C84 chip inkjet cartridges:

1. Attach the guiding tool on the unit as shown below.
2. The pins on the unit should connect with the chip of the C70 / C80 / C82 / C84 cartridge tightly as shown below.
3. Then the LED on the unit will flash 3-4 seconds.
4. The reset is finished.



Step-by-Step Instructions

(PRINT this set of instructions to follow every time you refill your cartridge)

Cartridge Refilling Instructions

Note: *If you refill this cartridge before it is completely empty, then you won't have as much of a problem with air pockets. When your cartridge reads approximately 1/4 full, go ahead and refill the cartridge.*



1) Put the cartridge on some paper towels in an area where you can tolerate a spill. You may wish to wear the rubber gloves provided if you don't wish to temporarily stain your fingers. Place the cartridge so that the ink exit hole is pointing down and is on the surface in front of you. The Epson Label should be pointing towards your chest. This is the Front side of the cartridge.

2) Reset the Chip using the chip resetter.

3) Using the small hand drill, drill a small refill hole with the hand drill provided in the area indicated by the picture. Drill the small hole between the outer circle of the bull's eye and the Epson label on the front side of the cartridge towards your chest. This will be your hole to release air. Drill a second hole in front of the first, just above/in front of the letter "S" in the word "PUSH". Note: For T048 cartridges make the hole just BELOW the letter "S" in the word "PUSH". You will inject ink into this hole and the other hole is to allow air to escape as ink fills the chambers. (Make the hole near the Epson label on the front of the cartridge otherwise you will create a permanent leak.) If you notice, looking from the side of the cartridge, there are two layers of plastic that you will need to penetrate. **Important:** These cartridges take some time to receive the ink. In some cases, it may be necessary to gently rock the cartridge back and forth to "burp" the cartridge of air blocking the ink flow.

4) Keep a tissue ready to catch any overflow. Release thru the syringe the appropriate amount of ink. Put the needle into the hole which you have made. It will only penetrate about 1/4" (1 cm) before it hits another baffle.

5) The black cartridges will accept up to 20ml of ink.
The color cartridges will accept up to 10ml of Ink.

6) Fill your cartridge very s-l-o-w-l-y. The ink has to have time to run into the various internal chambers. Air and ink bubbles will come out of the other hole. This is normal. Do not overfill. If the ink starts to bubble out of the hole then just use that amount.

7) - Replace the cartridge and if possible let the cartridge sit in the printer for 24 hours. This will give the ink time to settle down to the bottom and the air pockets to rise to the top. Run 1 - 3 cleaning cycles as per printer instructions. Or print 2 pages at this test site:

<http://www.inkonline.net/support/colorinktest> Color Ink Test
<http://www.inkonline.net/support/blackinktest> Black ink test

8) The next time you refill do it when the ink level gauge reads ½ or ¼ full. Remember, you reset the chip back to full but you stopped refilling when ink bubbles started coming out of the filling hole, this means that the cartridge was not exactly full and you want to do your next refill before it runs empty.

Sealing the filling hole is optional and only necessary if you plan to transport the cartridge or if you have extremely dry air. If you decide to seal the hole, we suggest some hot glue, aluminum tape, black electrical tape, or candle wax.

Troubleshooting

If the cartridge does not print, then the most likely problem is that the siphon is not working appropriately. Print something, even though ink is not coming out. The side to side action of the carriage will loosen up any air pockets and move them to the top.

Option two: *Insert needle tip of syringe into exit port. Pull syringe back to let air back into the syringe (suction out some air) then withdraw the needle. This will expel air into the syringe.* This should get the ink flowing.

Running an extra set of cartridges will cause you less trouble than trying to refill the ones that just ran low. Take the cartridges out of the printer and refill them, wrap them up in syran wrap (plastic wrap) and save them. Put the extra set in the printer. This will give the refilled set enough time for the air pockets to rise to the top and the ink to settle down to the bottom.

Alternate filling Instructions

Follow the above instructions, replacing # 3 below: Using this method of refill, you will only make one hole in the cartridge.

3) Using the small hand drill, drill a small refill hole with the hand drill provided. This will be your hole to release air and the same hole to inject ink into. Drill the hole, just above/in front of the letter "S" in the word "PUSH". Note: For T048 cartridges make the hole just BELOW the letter "S" in the word "PUSH". This hole will be used to inject ink into and to allow air to escape as ink fills the chambers. (Make the hole near the Epson label on the front of the cartridge otherwise you will create a permanent leak.) If you notice, looking from the side of the cartridge, there are two layers of plastic that you will need to penetrate. **Important:** These cartridges take some time to receive the ink. In some cases, it may be necessary to gently rock the cartridge back and forth to "burp" the cartridge of air blocking the ink flow.

AccuBrite, Inc. is not affiliated with the listed printer manufacturers or their subsidiaries. The use by AccuBrite, Inc. does not imply endorsement by or association with the brand name owners. The listed manufacturers, printers and cartridges are used only for the purpose of showing the compatibility of this AccuBrite, Inc. product. All other trademarks, brand names and logos referenced in or on this product are the property of their respective owners. This material is protected by the copyright laws of the United States and other countries. It is illegal to reproduce these instructions. It may not be reproduced, distributed, or altered in any fashion by any entity (either internal or external to AccuBrite), except in accordance with applicable agreements or contracts of licensing, without the express written consent of AccuBrite, Inc.