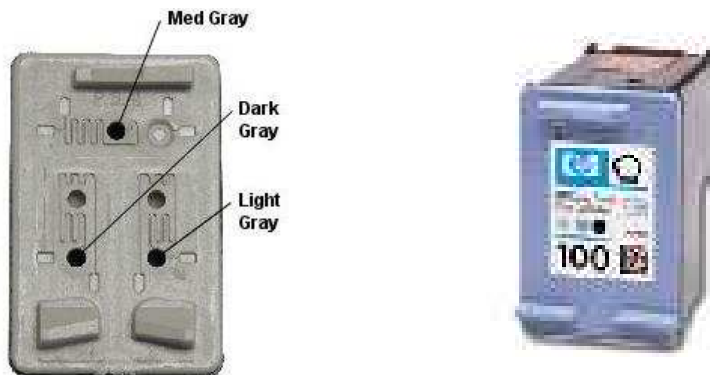


Step-by-Step Instructions

(PRINT this set of instructions to follow every time you refill your cartridge)

**HP Gray/C9359AN#59/ C9368AN #100
C9360AN #102**



FILL COLORS AS SHOWN IN PICTURE

Items needed: gloves, medium gray, dark gray, and light gray inks,# 5 refill station, drill, paper towels, review hints & tips and check list.

Syringe: Attach needle tip (located inside station # 4) to the syringe tightly. Unscrew lid on ink bottle. Puncture silver seal with needle tip making a small hole in the center of seal. Using the correct color pull the correct amount of ink into the syringe. Rinse syringe and needle tip after every use and before using syringe with another color. Rinse syringe and needle tip with water until the water runs clear.

Note: This cartridge requires medium gray, dark gray, and light gray inks. This kit does not include these inks. To order these inks call 559-439-5850.

- 1.) Place cartridge in Station #5 with copper circuits facing to the left and the plastic feet inside the bottom of the station to your right. Refill station lid has three holes. Place the lid on cartridge with single hole on the left and double holes on the right. Make sure lid snaps down over top of cartridge.
- 2.) One by one, insert drill into each of the three holes and down into the inkjet cartridge. You will have three fill holes for this cartridge. Rinse and dry drill after inserting into each color chamber.
- 3.) Remove the lid from cartridge. Leave cartridge in refill station.

4.) Insert the correct color using the syringe deep inside of each of the fill-holes. See picture and fill colors as shown. S-l-o-w-l-y release 5 ml of ink into each of the three fill-holes. The #102 will take 7 ml. **As you inject the ink withdraw and re-insert the syringe at different angles in order to expose the whole sponge to the ink.** If ink begins to “bubble” out of the fill-hole, remove bottle tip. Bubbling occurs when a cartridge is either over filled or if ink is being inserted too quickly. Wait several minutes and then try to s-l-o-w-l-y insert more ink. If ink begins to bubble out the fill hole or leak from the printhead, you have plenty of ink in the cartridge.

5.) After refilling, remove cartridge from refill station. Without the cartridge “printhead” touching the paper towels, place refilled cartridge upright upon folded paper towels and tilt cartridge at a slight angle. If the printhead on the cartridge is touching the paper towel, it could create a wicking effect that would pull the ink from your refilled cartridge. It is necessary for the cartridge to sit for at least 20 minute after refilling because there maybe some minor leakage from the cartridge. Never put a leaking cartridge back into your printer.

For best results, let cartridge sit for 8 hours after refilling so the ink can saturate the entire sponge.

6.) Do not plug the holes.

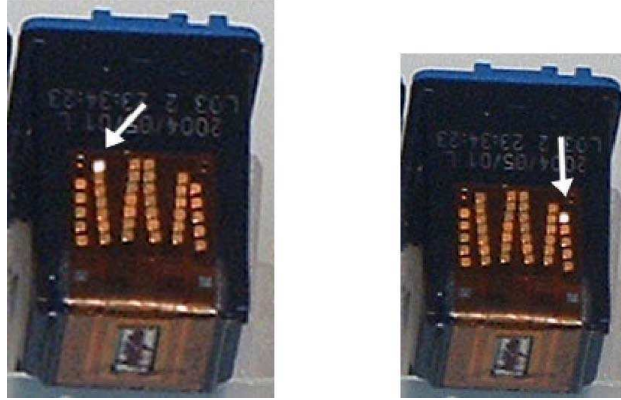
7.) Check the ink flow by gently pressing a dry paper towel against the printhead. You should see 3 small lines of each color. If not, gently press a warm, wet paper towel against the printhead until each color is visible.

8.) When all 3 colors are visible on paper towel, place cartridge back into the printer and run 1-2 print tests. **Or Print 2 pages using:**

http://www.refills4you.com/support/black_print_test.html black ink test
http://www.refills4you.com/support/color_print_test.html color ink test

Note: After refilling cartridge, if your printer does NOT recognize the filled cartridge, you may need to “reset” your ink level indicator. Please see instructions for resetting the HP C6658 inkjet cartridge.

Resetting Ink Level Indicator Hewlett Packard C6658 (#58)



The Estimated Ink Level Indicator, also known as the Ink Level Gauge, is found on the more current Hewlett Packard printers. This device allows you to view approximately how much ink is left in your black or color inkjet cartridge. After refilling an inkjet cartridge and placing it back in the printer, you may see a low ink warning or an empty ink warning. HP has a serial number or id number imbedded in the copper circuits on the back of the cartridges. The printer's internal memory "remembers" the cartridge serial number/id number. It also "remembers" that the cartridge was empty. This is why you get the low-ink warning. In fact, the printer will remember the last three cartridge's serial number/id number. There are ways to re-set the ink level indicator. (See below)

- 1.) Gently place a piece of scotch tape over this contact. SEE PHOTO 1 (small copper square). Cover only this contact. Do not mash or rub tape on contact. Gently apply pressure in order to get tape to stick.
- 2.) Place the cartridge in printer and close lid. At this time, you may receive an error message. Ignore message. The printer will probably print out an alignment page.
- 3.) Remove the cartridge from printer. Leave tape on the contact & place another piece tape over this contact. SEE PHOTO 2
- 4.) Place the cartridge in printer and close lid. At this time, you may receive an error message. Ignore message. The printer will probably print out an alignment page.
- 5.) Remove the cartridge from printer. *Remove all tape from cartridge. Place the cartridge in printer. Printer will print an alignment page. Estimated Ink Level Indicator should be correctly reset. You can check your "toolbox" to ensure this is correct.

*Note: Make sure that there is no remaining tape adhesive on contacts. Carefully examine the contacts to make sure no residue of tape adhesive is apparent on copper contacts. Gently blot any remaining adhesive off contacts. It is important that you do not rub or wipe the contacts.

Another Method of Resetting Hewlett Packard C6658 (#58)

This method requires that you have two additional cartridges just like the one you refilled. Cartridges can be old or new.

- 1.) Place refilled cartridge in printer. Let it print an alignment page.
- 2.) Remove refilled cartridge & put in the one of the two extra cartridges. Let it print an alignment page.
- 3.) Place remaining cartridge in printer. Let it print an alignment page.
- 4.) Remove the cartridge from printer. Place refilled cartridge in printer. Let it print out an alignment page. The estimated ink level should be reset.

AccuBrite, Inc. is not affiliated with the listed printer manufacturers or their subsidiaries. The use by AccuBrite, Inc. does not imply endorsement by or association with the brand name owners. The listed manufacturers, printers and cartridges are used only for the purpose of showing the compatibility of this AccuBrite, Inc. product. All other trademarks, brand names and logos referenced in or on this product are the property of their respective owners. This material is protected by the copyright laws of the United States and other countries. It is illegal to reproduce these instructions. It may not be reproduced, distributed, or altered in any fashion by any entity (either internal or external to AccuBrite), except in accordance with applicable agreements or contracts of licensing, without the express written consent of AccuBrite, Inc.

Copyright © AccuBrite, Inc. 2003-2008. All rights reserved

Copyright © AccuBrite, Inc. 2005-2008. All rights reserved