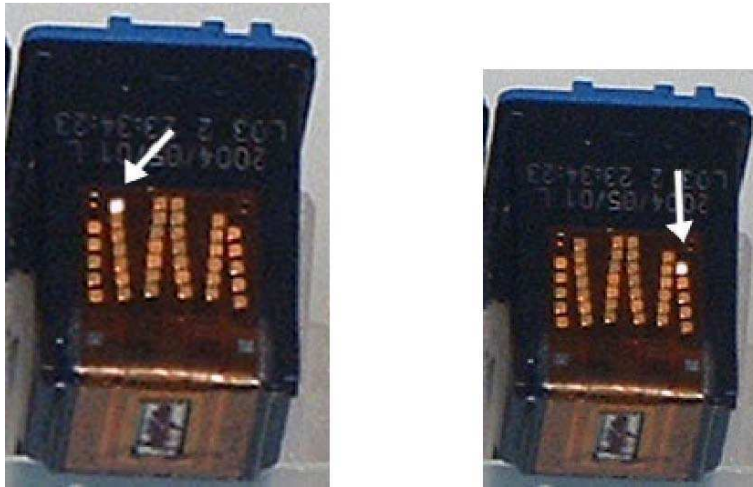


Resetting Ink Level Indicator Hewlett Packard C6658 (#58)



The Estimated Ink Level Indicator, also known as the Ink Level Gauge, is found on the more current Hewlett Packard printers. This device allows you to view approximately how much ink is left in your black or color inkjet cartridge. After refilling an inkjet cartridge and placing it back in the printer, you may see a low ink warning or an empty ink warning. HP has a serial number or id number imbedded in the copper circuits on the back of the cartridges. The printer's internal memory "remembers" the cartridge serial number/id number. It also "remembers" that the cartridge was empty. This is why you get the low-ink warning. In fact, the printer will remember the last three cartridge's serial number/id number. There are ways to re-set the ink level indicator. (See below)

- 1.) Gently place a piece of scotch tape over this contact. SEE PHOTO 1 (small copper square). Cover only this contact. Do not mash or rub tape on contact. Gently apply pressure in order to get tape to stick.
- 2.) Place the cartridge in printer and close lid. At this time, you may receive an error message. Ignore message. The printer will probably print out an alignment page.
- 3.) Remove the cartridge from printer. Leave tape on the contact & place another piece tape over this contact. SEE PHOTO 2
- 4.) Place the cartridge in printer and close lid. At this time, you may receive an error message. Ignore message. The printer will probably print out an alignment page.
- 5.) Remove the cartridge from printer. *Remove all tape from cartridge. Place the cartridge in printer. Printer will print an alignment page. Estimated Ink Level Indicator should be correctly reset. You can check your "toolbox" to ensure this is correct.

*Note: Make sure that there is no remaining tape adhesive on contacts. Carefully examine the contacts to make sure no residue of tape adhesive is apparent on copper

contacts. Gently blot any remaining adhesive off contacts. It is important that you do not rub or wipe the contacts.

Another Method of Resetting Hewlett Packard C6658 (#58)

This method requires that you have two additional cartridges just like the one you refilled. Cartridges can be old or new.

- 1.) Place refilled cartridge in printer. Let it print an alignment page.
- 2.) Remove refilled cartridge & put in the one of the two extra cartridges. Let it print an alignment page.
- 3.) Place remaining cartridge in printer. Let it print an alignment page.
- 4.) Remove the cartridge from printer. Place refilled cartridge in printer. Let it print out an alignment page. The estimated ink level should be reset.

AccuBrite, Inc. is not affiliated with the listed printer manufacturers or their subsidiaries. The use by AccuBrite, Inc. does not imply endorsement by or association with the brand name owners. The listed manufacturers, printers and cartridges are used only for the purpose of showing the compatibility of this AccuBrite, Inc. product. All other trademarks, brand names and logos referenced in or on this product are the property of their respective owners. This material is protected by the copyright laws of the United States and other countries. It is illegal to reproduce these instructions. It may not be reproduced, distributed, or altered in any fashion by any entity (either internal or external to AccuBrite), except in accordance with applicable agreements or contracts of licensing, without the express written consent of AccuBrite, Inc.

Copyright © AccuBrite, Inc. 2003-2008. All rights reserved